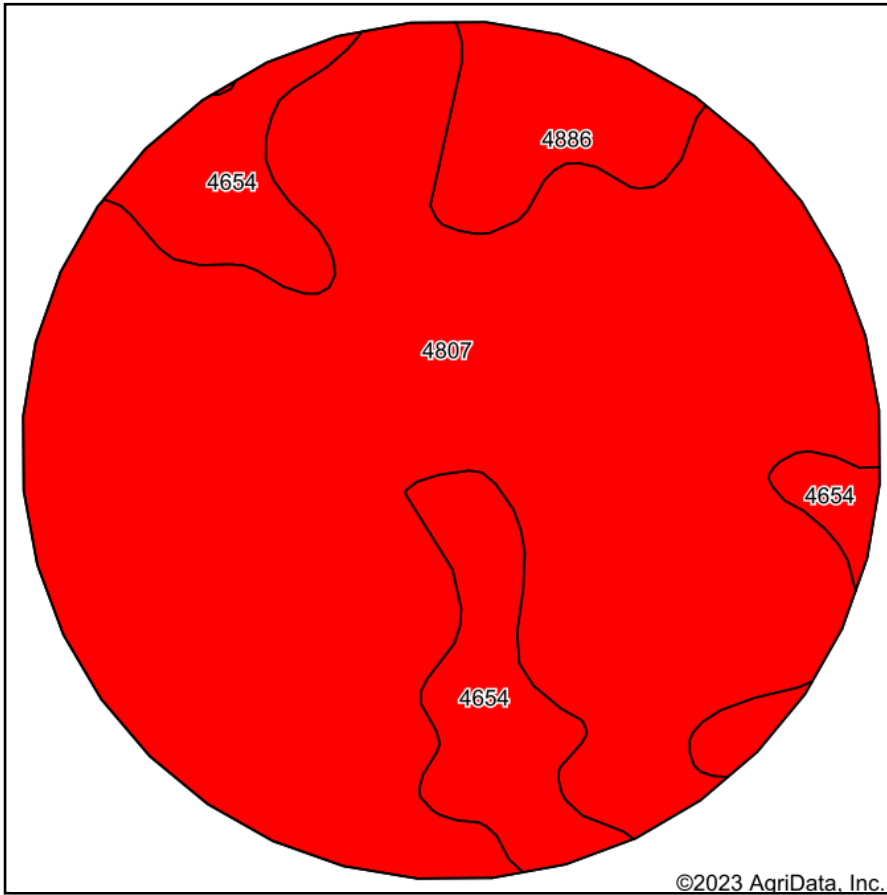
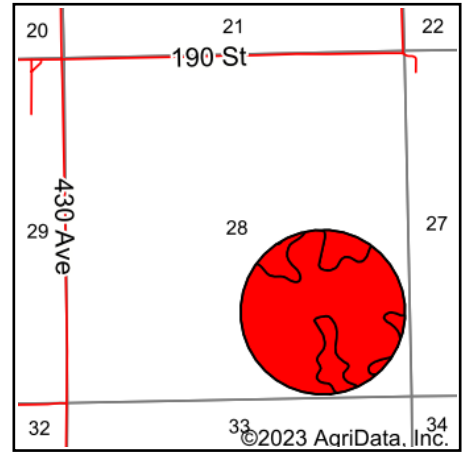


Soils Map



Soils data provided by USDA and NRCS.

©2023 AgriData, Inc.



State: **Nebraska**
 County: **Platte**
 Location: **28-17N-3W**
 Township: **Loup**
 Acres: **115**
 Date: **9/4/2023**



Maps Provided By:



© AgriData, Inc. 2023

www.AgriDataInc.com



Area Symbol: NE141, Soil Area Version: 20

Code	Soil Description	Acres	Percent of field	SRPG Legend	Non-Irr Class *c	Irr Class *c	SRPG	Alfalfa hay Tons	Alfalfa hay Irrigated Tons	Corn Bu	Corn Irrigated Bu	Grain sorghum Irrigated Bu	Grain sorghum Bu	Soybeans Bu	Soybeans Irrigated Bu	*n NCCPI Soybeans		
4807	Valentine fine sand, rolling	91.37	79.5%		Vle		20									19		
4654	Ipaga-Els loamy fine sands, 0 to 3 percent slopes	16.40	14.3%		Ive	Ive	25	3	5	35	105	81				22		
4886	Valentine-Thurman complex, 3 to 9 percent slopes	7.23	6.3%		Vle	Ive	30	2	4	48	104	74	50	19	25	24		
Weighted Average							5.71	*-	21.3	0.6	1	8	21.5	16.2	3.1	1.2	1.6	*n 19.7

*n: The aggregation method is "Weighted Average using all components"

*c: Using Capabilities Class Dominant Condition Aggregation Method

*- Irr Class weighted average cannot be calculated on the current soils data due to missing data.

Soils data provided by USDA and NRCS.