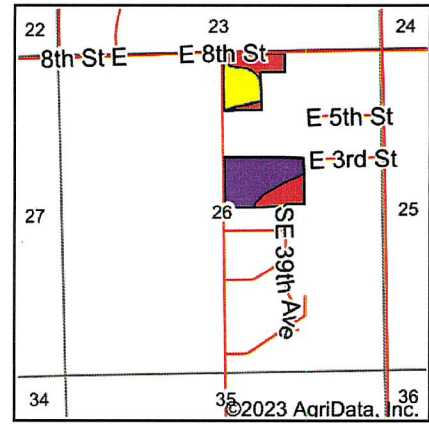
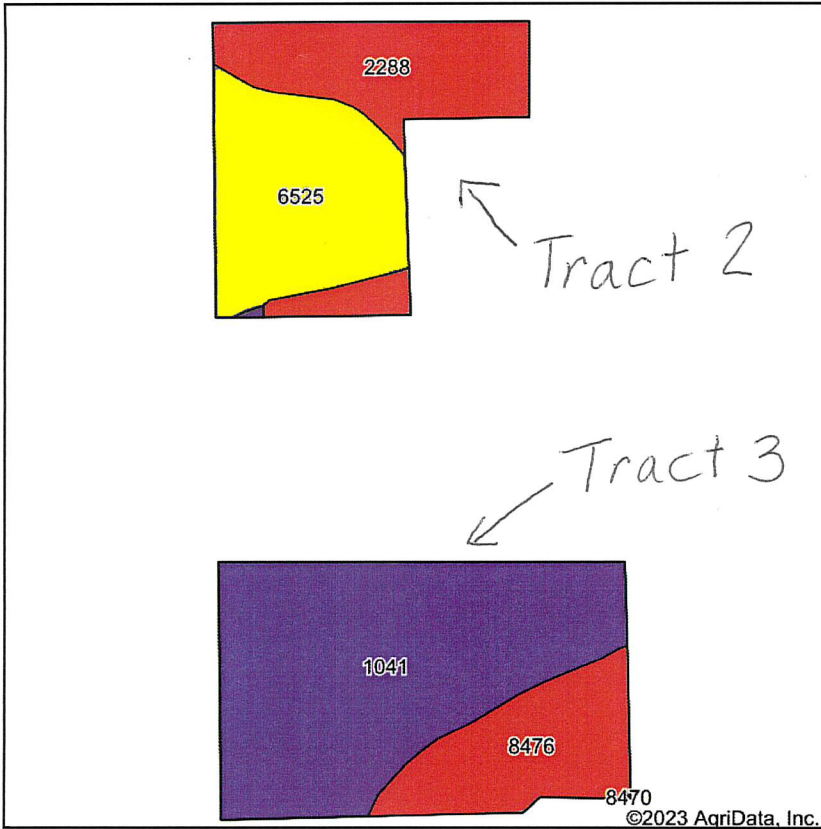


Soils Map



State: **Nebraska**
 County: **Platte**
 Location: **26-17N-1E**
 Township: **Columbus**
 Acres: **40.67**
 Date: **12/20/2023**







Maps Provided By:

 CUSTOMIZED ONLINE MAPPING
 © AgriData, Inc. 2023 www.AgriDataInc.com



Soils data provided by USDA and NRCS.

Area Symbol: NE141, Soil Area Version: 21

Code	Soil Description	Acres	Percent of field	SRPG Legend	Non-Irr Class *c	Irr Class *c	SRPG	Alfalfa hay Tons	Alfalfa hay Irrigated Tons	Bromegrass alfalfa Irrigated AUM	Corn Bu	Corn Irrigated Bu	Grain sorghum Bu	Grain sorghum Irrigated Bu	Oats Bu	Soybeans Bu	Soyl Irrig:	
1041	Grigston silt loam, wet substratum, rarely flooded	18.40	45.2%		lw	I	58	5	7		97	163	93	119			38	
6525	Janude fine sandy loam, 0 to 1 percent slopes	8.74	21.5%		lle	lle	61	4	6		85	152	82	114			35	
8476	Gibbon-Gayville silty clay loams, occasionally flooded	7.11	17.5%		llw	llw	47	3	4	1	64	96	62	92			22	
2288	Wann loam, 0 to 2 percent slopes, occasionally flooded	6.42	15.8%		llw	llw	49											
Weighted Average							1.55	1.55	55.3	3.6	5.2	0.2	73.3	123.2	70.5	94.4	*-	28.6

*n: The aggregation method is "Weighted Average using all components"

*c: Using Capabilities Class Dominant Condition Aggregation Method

Soils data provided by USDA and NRCS.